

CDR Server

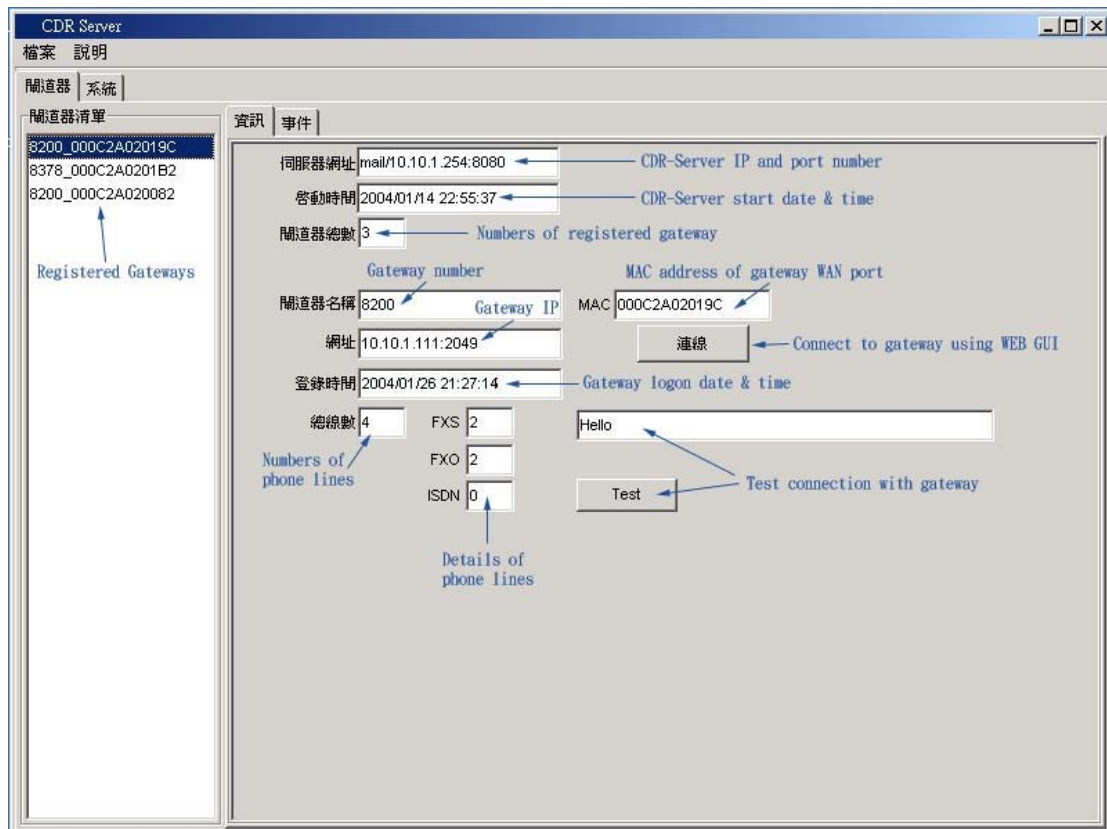
CDR Server is a program to record Call details. It's divided in 2 parts:

1. CDR Server - to log call details
2. CDR Report - to view logged details

Functions of CDR Server are explained below:

CDR Server description

Once you start the CDR Server program, it will record all the call detail transferred by VoIP Gateway. Recording is passive, so each gateway must set and point the CDR Server IP to CDR Server. When gateway starts to call someone or receive a call, it will send details of calls to the IP that stated in the CDR Server page. Example picture of 3 gateways registered in CDR Server is showed below:



On CDR Server, you can also see the real-time events of specific gateway that actually happened.

Time	Call-Ref	#	Event	Dialed	Caller-ID	Info	P-Port
2004/01/26 23:13:11	1	1	HOOK_OFF				
2004/01/26 23:13:13	1		DIAL	2252			
2004/01/26 23:13:13	1		RING_BACK				
2004/01/26 23:13:14	1		TALK			C(18) M(17)	
2004/01/26 23:13:16	1		DIAL	3			
2004/01/26 23:13:16	1		DIAL	0			
2004/01/26 23:13:17	1		DIAL	1			
2004/01/26 23:15:30	1		HOOK_ON				
2004/01/26 23:47:05	2		PSTN_CALL_IN		103		
2004/01/26 23:47:05	2		PSTN_HOOK_OFF				
2004/01/26 23:47:05	2		PSTN_CONNECTED				
2004/01/26 23:47:05	2		DIAL	2252			
2004/01/26 23:47:09	2		RING_BACK				
2004/01/26 23:47:09	2		TALK			C(18) M(17)	
2004/01/26 23:47:11	2		DIAL	8			
2004/01/26 23:47:12	2		DIAL	0			
2004/01/26 23:47:12	2		DIAL	0			
2004/01/26 23:48:00	2		DIAL	2			
2004/01/26 23:48:01	2		DIAL	3			
2004/01/26 23:48:01	2		DIAL	0			
2004/01/26 23:48:44	2		REMOTE_HOOK_ON				
2004/01/26 23:48:44	2		PSTN_HOOK_ON				
2004/01/26 23:48:44	2		HOOK_ON				
2004/01/26 23:57:24	3		PSTN_CALL_IN		15		
2004/01/26 23:57:24	3		PSTN_HOOK_OFF				
2004/01/26 23:57:24	3		PSTN_CONNECTED				
2004/01/26 23:57:24	3		DIAL	2252			
2004/01/26 23:57:27	3		RING_BACK				

You can also see the events that each gateway logon.

時間	事件
2004/01/14 22:55:43	Gateway[8200] MAC[000C2A020082] From [61.222.171.22:2348] FXS(2) FXO(2) ISDN(0) CallRef(74) Time[2000/01/02 08:17:38] Login!
2004/01/14 22:55:43	Gateway[8200] MAC[000C2A02019C] From [10.10.1.111:2387] FXS(2) FXO(2) ISDN(0) CallRef(61) Time[2000/01/09 00:44:45] Login!
2004/01/15 00:16:37	Gateway[8378] MAC[000C2A0201B2] From [61.230.9.101:2050] FXS(2) FXO(2) ISDN(0) CallRef(2) Time[2000/01/01 08:00:12] Login!
2004/01/15 02:04:34	Gateway[8200] MAC[000C2A02019C] From [10.10.1.111:2048] Re-Login!
2004/01/15 02:04:34	Gateway[8200] MAC[000C2A02019C] From [10.10.1.111:2048] FXS(2) FXO(2) ISDN(0) CallRef(64) Time[2000/01/01 08:00:06] Login!
2004/01/15 02:04:34	Gateway[8200] from [10.10.1.111:2387] Relogin Kickout
2004/01/15 02:10:44	Gateway[???] from [24.232.59.13:2765] Gateway Disconnect
2004/01/15 02:10:47	Gateway[???] from [24.232.59.13:51059] Bad Packet
2004/01/15 02:10:47	Gateway[???] from [24.232.59.13:51060] Bad Packet
2004/01/15 02:10:47	Gateway[???] from [24.232.59.13:51061] Bad Packet
2004/01/15 02:25:12	Gateway[???] from [218.59.145.55:1558] Bad Packet
2004/01/15 02:26:29	Gateway[8378] MAC[000C2A0201B2] From [61.230.16.82:2050] Re-Login!
2004/01/15 02:26:29	Gateway[8378] MAC[000C2A0201B2] From [61.230.16.82:2050] FXS(2) FXO(2) ISDN(0) CallRef(2) Time[2000/01/01 08:00:12] Login!
2004/01/15 02:26:29	Gateway[8378] from [61.230.9.101:2050] Relogin Kickout
2004/01/15 02:28:57	Gateway[???] from [218.59.145.55:2751] Bad Packet
2004/01/15 06:04:02	Gateway[8200] MAC[000C2A020082] From [61.222.171.22:2049] Re-Login!
2004/01/15 06:04:02	Gateway[8200] MAC[000C2A020082] From [61.222.171.22:2049] FXS(2) FXO(2) ISDN(0) CallRef(122) Time[2000/01/01 08:00:06] Login!
2004/01/15 06:04:02	Gateway[8200] from [61.222.171.22:2348] Relogin Kickout
2004/01/15 21:27:36	Gateway[???] from [218.5.19.141:17838] Bad Packet
2004/01/15 22:52:30	Gateway[???] from [64.223.176.197:1434] Bad Packet
2004/01/16 02:37:06	[Logout: 8200] [IP:10.10.1.111] [Size:21]
2004/01/16 02:37:06	Gateway[8200] from [10.10.1.111:2048] Gateway Disconnect
2004/01/16 02:37:20	Gateway[8200] MAC[000C2A02019C] From [10.10.1.111:2048] FXS(2) FXO(2) ISDN(0) CallRef(29) Time[2000/01/01 08:00:06] Login!
2004/01/16 04:46:11	Gateway[???] from [24.232.59.13:2765] Gateway Disconnect
2004/01/16 04:46:13	Gateway[???] from [24.232.59.13:46741] Bad Packet
2004/01/16 04:46:13	Gateway[???] from [24.232.59.13:46743] Bad Packet
2004/01/16 04:46:13	Gateway[???] from [24.232.59.13:46742] Bad Packet
2004/01/16 14:39:33	Gateway[???] from [218.2.9.252:4478] Gateway Disconnect

CDR Report description

All detail of each call is showed in the CDR Report. First select the date then choose the desired gateway and press "Search" to view the log.

CDR Report

File Help

Search Filter

Gateway : [8200_000C2A020082] Total Record Count : [60] Filter Record Count : [60]

Record Show

Year Month

1, 2004

Sun Mon Tu... Wed Thur Fri Sat

4 5 6 7 8 9 10

11 12 13 14 15 16 17

18 19 20 21 22 23 24

25 26 27 28 29 30 31

Select date

Gateway Select gateway

8200_000C2A020082 Select

From

2004/01/15 (yyyy/mm/dd)

To

2004/01/15 (yyyy/mm/dd)

Search

Press search

#	Call-Ref	Port	Date	Notation	Dialed	Time	Begin	PSTN Dial
0	86	4	2004/01/15	Call out	2252, 2, 1, 0, ...	00:03:33	00:04:32	
1	87	4	2004/01/15	Call out	2252, 8, 0, 2	00:00:24	00:10:41	
2	88	3	2004/01/15	Call out	2	00:02:04	00:10:51	26735152
3	89	2	2004/01/15	Hook On/Off			00:16:57	
4	90	3	2004/01/15	Call out	2	00:01:30	00:18:21	23415598
5	91	3	2004/01/15	Call out	2	01:51:51	01:07:25	26735152
6	92	4	2004/01/15	Call out	2252, 3, 1, 9	00:00:29	01:20:36	
7	93	4	2004/01/15	Call out	2252, 2, 0, 2	00:02:38	01:21:14	
8	94	4	2004/01/15	Call out	2252	00:00:02	01:50:55	
9	95	4	2004/01/15	Call out	2252, 2, 0, 1	00:00:35	02:00:08	
10	96	4	2004/01/15	Call out	2252, 8, 0, 2	00:00:27	02:03:20	
11	97	4	2004/01/15	Call out	2252, 2, 0, 1	00:01:31	02:25:16	
12	98	1	2004/01/15	Call in		00:01:05	02:27:03	
13	99	4	2004/01/15	Call out	2252, 8, 0, 2	00:00:38	02:31:19	
14	100	1	2004/01/15	Call in		00:15:24	02:32:06	
15	101	3	2004/01/15	Call out	2	00:56:33	03:10:20	23415598
16	102	1	2004/01/15	Call in		00:00:01	03:15:44	
17	103	1	2004/01/15	Call in		00:00:13	03:16:32	
18	104	1	2004/01/15	Call in		00:00:21	03:19:14	
19	105	4	2004/01/15	Call in		00:00:06	03:19:41	0,
20	106	1	2004/01/15	Call in		00:00:35	03:44:32	
21	107	1	2004/01/15	Call in		00:00:45	03:53:44	
22	108	1	2004/01/15	Call in		00:00:47	03:54:45	
23	109		2004/01/15	Call in reject			03:55:20	
24	110	1	2004/01/15	Call in		00:00:41	03:55:39	
25	111	1	2004/01/15	Call in		00:00:41	04:09:41	
26	112	1	2004/01/15	Call in		00:00:42	04:12:50	

Thursday, January 29, 2004

The record is shown in pattern below

f	Port	Date	Notation	Dialed	Time	Begin	PSTN Dial	PSTN Time	Caller ID	PSTN Caller ID	End
4		2004/01/15	Call out	2252, 2, 1, 0, ...	00:03:33	00:04:32	Number dialed in FX0	00:03:38		105	00:08:11
4		2004/01/15	Call out	2252, 8, 0, 2	00:00:24	00:10:41		00:00:28		106	00:11:09
3		2004/01/15	Call out	2	00:02:04	00:10:51	26735152	00:02:07		End time	00:12:58
2		2004/01/15	Hook On/Off	Number dialed		00:16:57			8378701		00:16:57
3		2004/01/15	Call out	2	00:01:30	00:18:21	23415598	00:01:32			00:19:54
3		2004/01/15	Call out	2	01:51:51	01:07:25	26735152	01:51:54			02:59:20
4		2004/01/15	Call out	2252, 3, 1, 9	00:00:29	01:20:36		00:00:34		106	01:21:10
4		2004/01/15	Call out	2252, 2, 0, 2	00:02:38	01:21:14		00:02:42		106	01:23:57
4		2004/01/15	Call out	2252	00:00:02	01:50:55		00:00:08		106	01:51:03
4		2004/01/15	Call out	2252, 2, 0, 1	00:00:35	02:00:08		00:00:40		105	02:00:49
4		2004/01/15	Call out	2252, 8, 0, 2	00:00:27	02:03:20		00:00:32		106	02:03:52
4		2004/01/15	Call out	2252, 2, 0, 1	00:01:31	02:25:16		00:01:36		105	02:26:52
1		2004/01/15	Call in		00:01:05	02:27:03			8378701		02:28:08
4		2004/01/15	Call out	2252, 8, 0, 2	00:00:38	02:31:19		00:00:41		106	02:32:00
1		2004/01/15	Call in		00:15:24	02:32:06			800701		02:47:31
3		2004/01/15	Call out	2	00:56:33	03:10:20	23415598	00:56:30			04:06:57
1		2004/01/15	Call in		00:00:01	03:15:44			77101		03:16:12
1		2004/01/15	Call in		00:00:13	03:16:32			77101		03:16:57
1		2004/01/15	Call in		00:00:21	03:19:14			2252701		03:19:47
4		2004/01/15	Call in		00:00:06	03:19:41	0,	00:00:09	2252701		03:19:50
1		2004/01/15	Call in		00:00:35	03:44:32			77101		03:45:10
1		2004/01/15	Call in		00:00:45	03:53:44			1126701		03:54:30
1		2004/01/15	Call in		00:00:47	03:54:45			1126701		03:55:34

There is also a filter to filter out some unnecessary records.

Search Filter

Filter Record

Uses Filter

Call In

Call Out

All

Only PSTN

Call Out Failed

Call In Reject

Other

Refresh record

Refresh

Filter options

